



General

The well-known ETA-pump on the bearing bracket C and D is constructed in accordance with DIN 24 255 standard and completes the performance range up to max. 1800 m³/hr (6600 Imp.g.p.m., 7900 USgpm). The graduation of pump sizes enables you to select a model of high efficiency and low absorbed horsepower under any set of operating conditions.

Field of Application

General water supplies for municipalities, industry and agriculture; water works, pressure boosting and irrigation plants; circulation of hot water, cooling water and oil; as condensate, building sites, and loading pumps etc.

Design

Horizontal single and two stage centrifugal pump with volute casing flanged onto the bearing bracket. Sizes 100-50/2 and 125-50/2 are two-stage. Overhung radial flow impeller equipped with balance holes for hydraulic balancing. Renewable casing wear rings and shaft protecting sleeves.

Bearings

Axial and radial location by two oil lubricated deep groove ball bearings in the bearing pedestal. Grease lubrication on request.

Uncooled soft-packed stuffing box up to 110 °C (230 °F) or cooled soft-packed stuffing box up to 140 °C (285 °F). Other constructions are available which cater for special requirements. Uncooled mechanical seals up to 140 °C (285 °F) max. may also be fitted.

Nozzle Orientations

Suction nozzle axial, discharge nozzle radially pointing upward; on sizes 200-23, 250-29 and 300-35 tangentially left pointing upward. Other nozzle positions possible upon request. Flanges machined according to DIN 2533, NP 16, from size 200 upward according to DIN 2532, NP 10.

Drive

Direct drive by an electric motor, an internal combustion engine or a turbine via a flexible coupling.

Shaft Seal



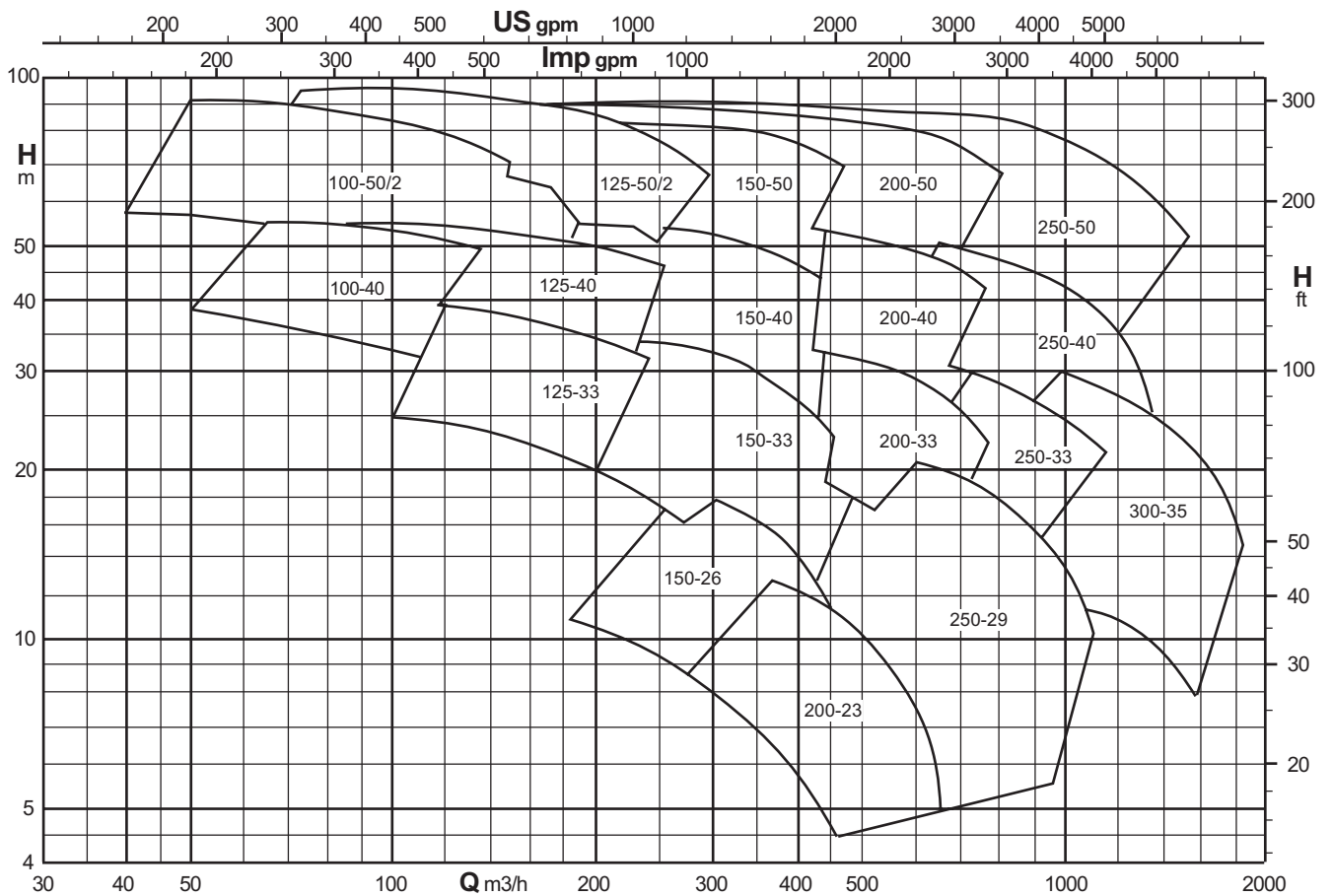
Materials of construction

Part No.	Part Designation	Material combinations								
		(01)	(02)	(03)	(04)	(05)	(06)	(07)	(08)	
101	Volute Casting	JL 1040								
109	Diffuser	JL 1040								
122/122a	Wear ring	JL 1040	GCuSn 10	JL 1040	GCuSn 10	JL1040	GCuSn 10	GCuSn 10		
211	Pump Shaft	080M40Q				431S29			080M40Q	431S29
202/202a	Impeller	JL1040	GCuSn 10	JL 1040	GCuSn 10	JL1040	GCuSn 10	GCuSn 10		
	Shaft seal	Packed gland		Mechanical	Packed gland		Mechanical			
350.1	Bearing housing	JL 1040								
451	Stuffing housing box	JL 1040								
452	Gland	JL 1040								
524	Shaft Protecting sleeve	JL 1040				316 SS				

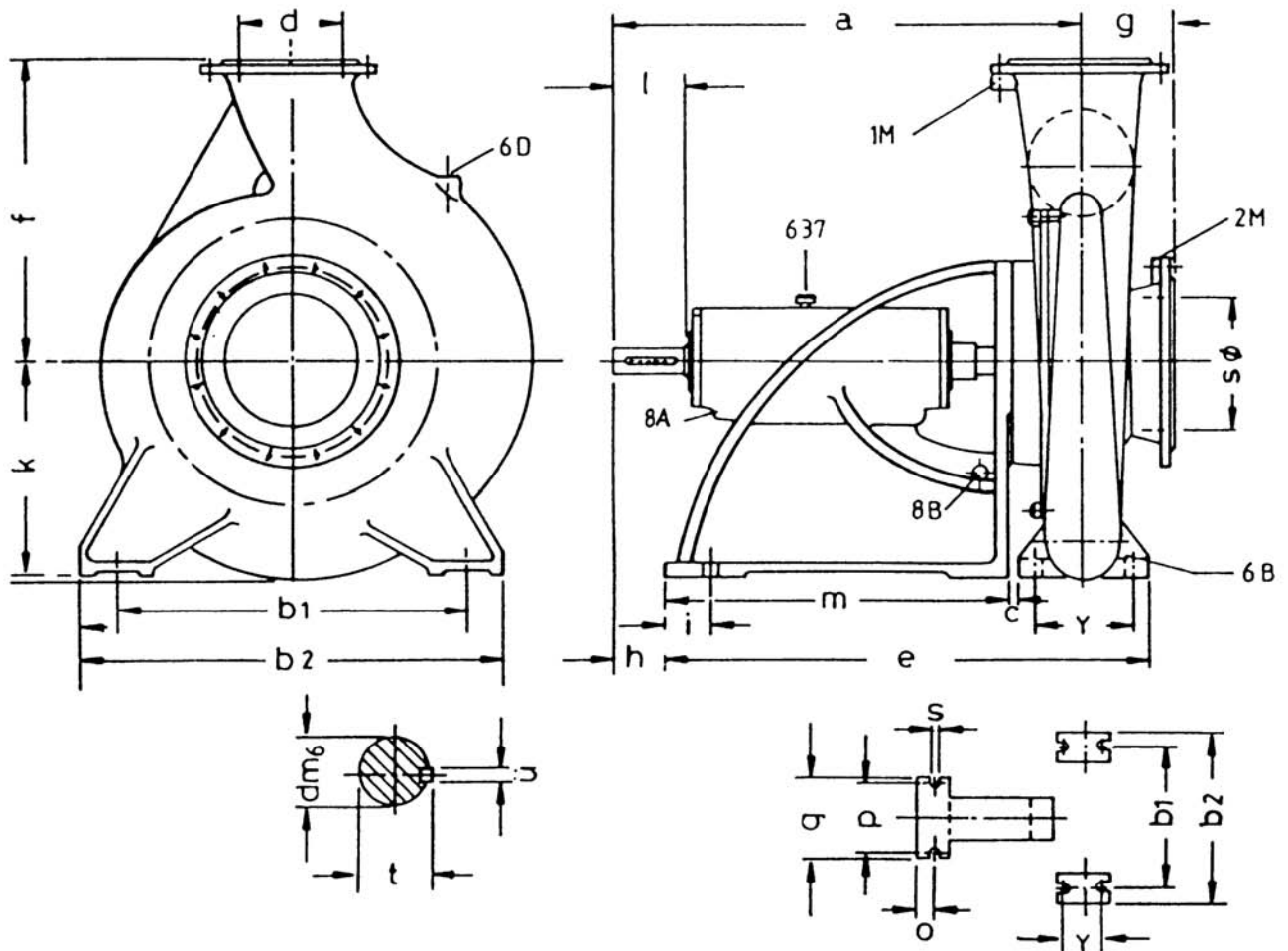
JL 1040 → GG-25

Selection Charts

Selection chart at 1450 r.p.m.



Dimension Table ETA - B:



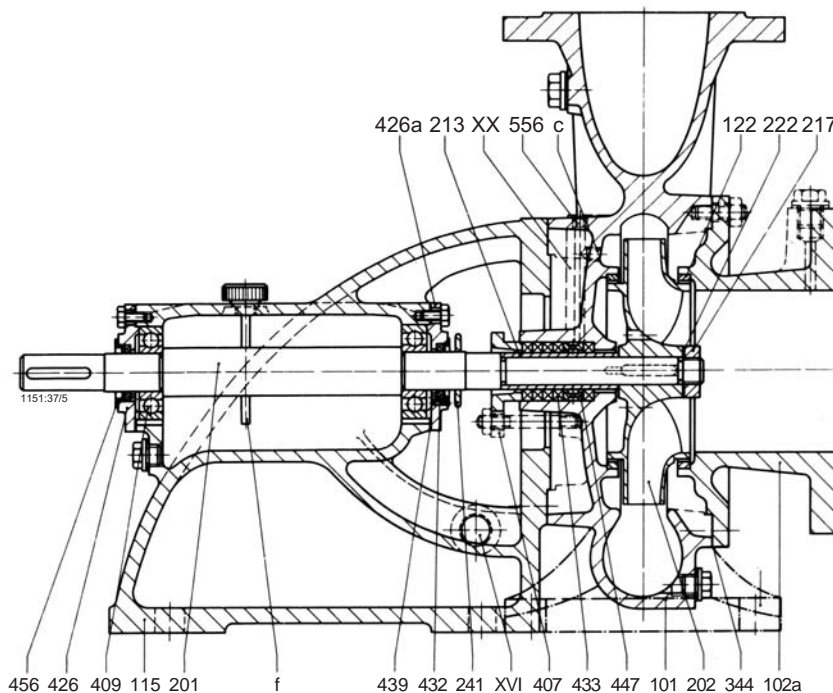
Size	Bearing Pedestal	Pump Dimensions																		Shaft (pump)			
		a	b1	b2	c	d	e	f	g	h	i	k	m	o	p	q	s	y	so	dms	l	u	t
200 - 33	D	895	560	700	28	200	928	475	175	92	85	400	650	85	335	380	28	190	250	50	135	14	53.5
200 - 50	DS	900	660	800	33	200	933	575	175	92	85	400	650	85	335	380	28	190	250	50	135	14	53.5

Connections provided for:	Size
6D Priming funnel, venting	$3/4"$
6B Drain plug	$3/4"$
1M Pressure gauge	$1/2"$
2M Vacuum gauge	$1/2"$
8A Oil-drain plug	$3/8"$
8B Leakage-drain plug	1"
637 Oil-filling plug	20 mm

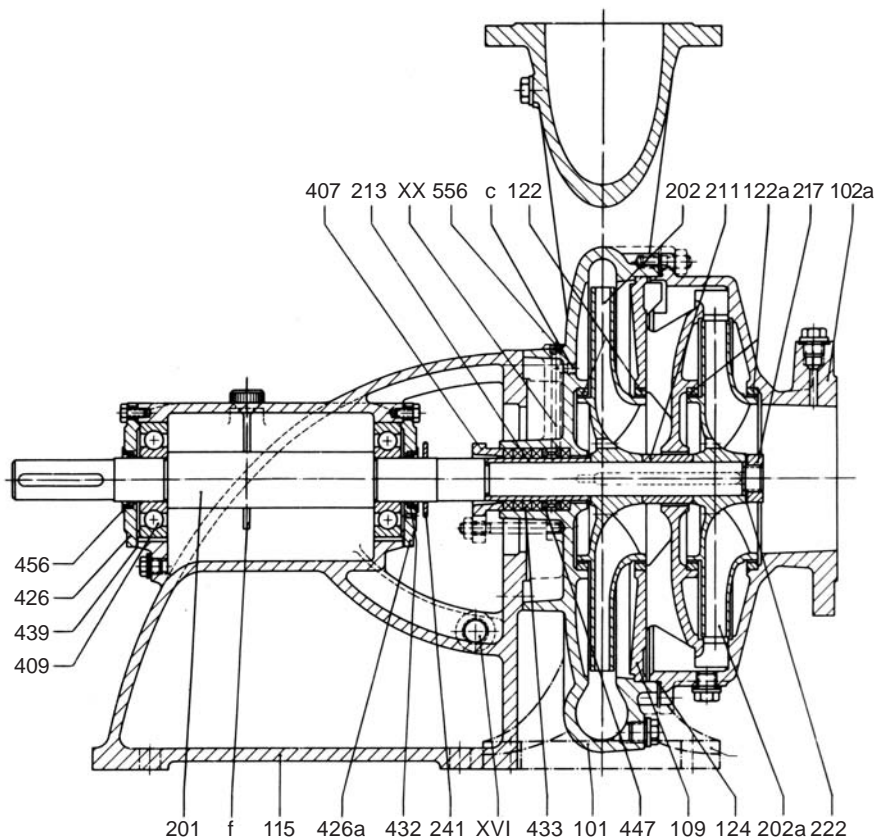
Suction flange ACC TO DIN 2533 ND16						
Size	S ϕ	Flange ϕ	Bolt Circle ϕ	Raised Face ϕ	Bolts	
					No.	Holes ϕ
200 - 33	250	405	355	320	12	27
200 - 50	250	405	355	320	12	27

Discharge flange ACC TO DIN 2533 ND16						
Size	S ϕ	Flange ϕ	Bolt Circle ϕ	Raised Face ϕ	Bolts	
					No.	Holes ϕ
200 - 33	200	340	295	268	12	23
200 - 50	200	340	295	268	12	23

Part No.	Designation
101	Volute casing
102a	Suction cover
109	Diffuser
115	Bearing pedestal
122	Joint ring
122 a	Joint ring
124	O ring
201	Shaft
202	Impeller
202 a	Impeller, 1st stage
211	Spacer sleeve
213	Shaft protecting sleeve
217	Impeller nut
222	Lock washer
241	Thrower
301	Cooling cover
344	Gasket
400.3	Flat gasket
407	Stuffing box gland
409	Deep groove ball bearing
412.3	Joint ring
412.4	Joint ring
426	Bearing end cover
426a	Bearing end cover
432	Felt ring
433	Stuffing box packing
434	O-ring
437	Gasket
438	Gasket
439	Gasket
447	Lantern ring
456	Felt ring cover
471	Cover
472	Rotating seal ring for casing
474	Washer
475	Stationary seal ring
478	Right handed spring
500.3	Set ring
556	Threaded plug/Sealing liquid
IX	Cooling water / Inlet
X	Cooling water / Outlet
XVI	Leakage drain
XX	Sealing liquid / Inlet
f	Oil dipstick
c	Sealing liquid channel



ETA with uncooled soft-packed stuffing box, construction N



ETA, two-stage, with uncooled soft-packed stuffing box, construction N, sizes 100-50/2 and 125/50-2

Subject to technical modification without prior notice

12.7.2005

Gartone Press: Tel: (011) 440-6126